

Greenwood High School Choral Handbook- 2023-2024

Gina Jolly- Choral Director

jollyg@gwd50.org/ Office: 864-941-5643/ Cell: 864-993-9374

The following handbook is provided to ensure a successful semester for each individual student as well as for the entire choral program. The choral program at GHS provides an opportunity for singers to study and perform high-caliber choral music, study proper vocal techniques and musical skills, and share their vocal talents with our community. All students who have a sincere interest in singing are invited to participate. Discipline, dedication, and professionalism will be encouraged in order to reach the highest degree of musical success. These standards are carried through to rehearsals, attendance, and performances.

Contents

Choral Philosophy/ REMIND/ Google Classroom	1
Discipline and Class Procedures.....	2
Rehearsal and Performance Standards and Instruction Materials needed.....	2-3
Grading Procedures and Honor Credit.....	4-5
General Information.....	5
Parents Responsibility to the chorus	6
Concert Attire	6
Fundraising and Awards.....	7
Concerts and Events 2023-2024	8

CHORAL PHILOSOPHY:

- To provide well-rounded music education for all chorus students
- To instill a love of Chorus music that will last a lifetime
- To develop the individual voice and an understanding of its relationship to a choral ensemble
- To increase music literacy, musicianship skills, and knowledge
- To provide a source of enjoyment and enhance the quality of life
- To assist each student in representing themselves and their school with the highest standards of musical performance through individual behavior and performing to the best of each singer's ability
- To prepare the student for experiences available in higher education and to encourage future musical leaders
- To instill the value of effort, sacrifice, cooperation, conformity, fellowship, self-discipline, and dedication
- To contribute to a balanced program of cooperation, respect, discipline, dedication, and responsibility
- To always strive to best serve the interests of the student, school, and community

REMIND: Each student is required to register and Parents are encouraged to.

Parent info: Text @ infochorus to 81010 or send email to infochorus@mail.remind.com

Early Bird: Eagle Singers: Text @ghses23-24 to 81010 or send email to ghses23-24@mail.remind.com

1st Block: Freshman Singers: Text ghsfs23-24 to 81010 or send email to ghsfs23-24@mail.remind.com

2nd Block: Treble Choir: Text @ghstc23-24 to 81010 or send email to ghstc23-24@mail.remind.com

4th Block: Mixed Chorus: Text @ghsmc23-24 to 81010 or send email to ghsmc23-24@mail.remind.com

Google Classroom: Each student is required to join their classroom with the codes below.

Early Bird 23-24: **Eagle Singers** wp6cg2d- year round

1st Block Fall 2023: **Freshman Singers** ibimgfy

2nd Block Fall 2023: **Treble Choir** hhwbkbg

4th Block Fall 2023: **Mixed Choir** wqsmvw2

2nd Block Spring 2024: **Treble Choir** hhwbkbg

*Students are EXPECTED to check REMIND and Google Classroom accounts regularly.

Discipline and Class Procedures:

Conduct: All students are expected to demonstrate appropriate behavior at all times. Each member must display self-control and self-discipline to promote the cohesiveness of the ensemble.

Arrive on time and be prepared to start class: All students are to have their music ready, pencil in hand, read the board for the rehearsal plan, and prepare any supplies needed. All book bags are to be stored under their assigned seat or designated area. Students are to be sitting in their assigned seats and ready to begin rehearsal.

Not allowed in the classroom: Gum, food, or drinks in the chorus room. (Clear water bottle with a top is the only exception)/ Putting on makeup, brushing hair, and other personal grooming./ Horse playing, wrestling, or goofing off./ Cell Phone use during class is prohibited.

Clean Up: Put all choir supplies back where they belong: notebook, folder, equipment, and chairs. **KEEP THE CHORUS ROOM CLEAN!!**

Rehearsals: Talking is not permitted when the director or any other person is addressing the chorus./Disruptive behavior will NOT be tolerated./ ALWAYS have your music and a PENCIL in class. Mark your music appropriately during rehearsal./ Participate fully in all class rehearsals. Students are expected to provide positive participation.

Off Limits: Piano and sound equipment. DO NOT TOUCH without the director's permission. Thermostat - DO NOT TOUCH without the director's permission. Director's offices. No student is allowed in the director's office without permission. Unsupervised Chorus room. Students may not be in the chorus room without a teacher, administrator, or substitute. The Chorus room will be closed during lunch and after school unless otherwise notified.

Restroom Policy: Students do not have to ask to go to the Restroom, however, they are only allowed to use the restroom **ONE** time during class time (this includes getting water, tissue, etc.) / Student must put their ID on the Hook on the door. Only one student waiting at the door at any time. This includes before the bell rings. Failure to follow restroom policy will result in loss of restroom privileges.

GHS Rules: Adhere to all school-wide rules as stated in the student handbook.

Consequences: Based on weekly behavior

1st consequence –Verbal warning by the teacher, 2 pts deducted from daily grade.

2nd consequence –Conference with pupil, 5 pts deducted from daily grade.

3rd consequence –Conference with pupil and parent contact, 10 pts deducted from daily grade.

4th consequence –Referral written, parent contact, 15 pts deducted from grade.

5th consequence –Referral to Principal, grade of a zero.

Rehearsal and Performance Standards:

Attendance: Attendance at rehearsals and performances outside of the school day is REQUIRED of the students enrolled in the GHS choral program. After-school performances are for a grade: date and time are given at least two weeks in advance.

Class Attendance: Please keep in mind that it is impossible to make up a missed rehearsal. Any student who misses more than 10 minutes of each class is marked absent.

Tardiness: If any student is tardy during the first 10 minutes of class their tardy card will be punched, if no tardy card - they will be issued a tardy notice. (See student handbook for consequences). After 10 minutes, a student must have a pass from the Attendance office. An excused tardy must be verified by a pass.

Concert/ Performance attendance: All performances are EXPECTED but not mandatory. However, a written Google Form will be completed explaining why the student will miss the concert. Prior notice will be given. **ALL PERFORMANCES ARE FOR A GRADE!!** If a student opts out of performing at a concert, he or she has to complete the makeup work for that performance. Keep in mind that if a student just doesn't WANT to perform, then they are in the WRONG class, performances are EXPECTED.

Acceptable excuses for missing a performance: Missing the entire day of school the day of rehearsal or performance due to sickness, Death in the immediate family, or Compromise with other SCHOOL activities (at least a *two-week notice must be given* and every means of "working it out" exhausted before this excuse will be considered) Other rare circumstances deemed excusable by the director. ***Even if the absence is excused and acceptable, the student will still have to complete make-up work for the missed performance.***

For all performance absences, the following procedure must be followed by the student and parent: Failure to follow this procedure will result in a Performance No- Show (zero).

- The director must be notified in advance in writing or by email from the Parent or Guardian.
- For illness, a parental note or doctor's excuse must be submitted.
- Follow-up is the sole responsibility of the student! Without notification, the student will not be allowed to complete the makeup work for the performance.

At the beginning of the semester, dates are carefully set with important school activities in mind to minimize conflicts. Should a conflict arise, the director should be contacted **immediately**. It takes dedication from every member of the ensemble to produce a quality performance.

Additional notes about performances:

- Students and parents will be provided with reasonable notice of any additional rehearsals and performances that are not already in this handbook.
- All school rules apply at rehearsals and performances.
- Failure to attend rehearsals, including excessive class absences, may result in removal from performances at the discretion of the director.
- Failure to achieve a reasonable knowledge of performance repertoire can result in removal from the performance at the discretion of the director.
- The director reserves the right to remove any student from a performance for not meeting basic behavioral standards, including, but not limited to, in or out-of-school suspension from any teacher and repeatedly breaking classroom rules.
- An alternative assignment will be assigned for students not performing. Students who do not attend a performance without prior notice will receive a zero for a concert grade, and they will not be allowed to complete the makeup work. Communication is the Key to success.
- Work is never accepted as an excuse to miss a rehearsal or performance. Many students successfully schedule their part-time job hours around choral events.

Attitude: A positive, cooperative attitude is the most important quality for a chorus member to have. It is the basis upon which all fine things will be accomplished. It is the key to excellence. The word carries with it the implication of punctuality, dependability, concentration, conscientious effort, dedication, and open-mindedness. This attitude must go beyond the individual; it must become the collective spirit of the chorus.

Care of Music: School-owned music is purchased by the school and Booster Club for use by the Choral Department and is loaned to students for use while in Chorus. It is not the property of the student and must be treated as borrowed material or as any other textbook. A fee per missing piece of music will be assessed. Students are to use only PENCIL when writing in their music, or colored pencils if color marking the score.

Instructional Materials: The following will be given to each student: A black 3-ring binder, pencil, and notebook. Students can opt to purchase: *yellow Highlighter, *colored pencils- erasable preferred- Blue, Red, Green, Orange, Yellow, Purple *quality eraser.

Rehearsals: Each choral rehearsal involves preparing the mind and body, working on proper choral breathing (breathing motion/ steady airflow), working on proper voice/tone production (tall unified vowels, clear, crisp consonants, resonance, placement, registration), blending voices for proper choral tone (listening and adjusting, group conformity), learning to read music (rhythm, tonal, melodies), and learning basic musicianship skills (dictation, composition, error detection, aural skills).

Grading Procedures:

Semester classes: 1st 9 weeks 40% / 2nd 9 weeks 40% / Exam 20% (The final concert is a portion of the exam grade)
 Early Bird year long: 1st 9 weeks 20% / 2nd 9 weeks 20%/ 3rd 9 weeks 20% / 4th 9 weeks 20 % / Final exam 20%
 Grading Scale: A 90-100/ B 80-89/ C 70-79/ D 60-69/ F below 60

A student's nine weeks grade will be determined using the following categories and percentages:
 Major 50%, Minor 30%, Content 20%

Major 50%: Performances/ Major Tests

All performances will be worth 100 points each and will count as 50% of the student's nine-week grade. Absences from performances may be made up, with a written excuse as to why the performance was missed. Once the excuse is submitted, the student will receive an assignment from Mrs. Jolly, and the work must be completed by a given deadline in order for credit to be given. (Keep in mind, that this is a performance-based class, and performance at concerts is EXPECTED)

Tests: Students will be given 2 Major tests every 9 weeks.

Minor 30%: Rehearsal /Ensemble Skills

Upon entering class daily, students can earn up to 20 points. TOTAL: 20 points per day/ 100 points per week. At the end of every 5 days, these points are added to equal up to 100 and will be called a "weekly rehearsal grade." At the end of the 9 weeks, they will be averaged to equal 30% of the student's nine weeks grade.

Below is the breakdown for earning these points on a daily basis. (Please refer to the *Consequences* mentioned above.)
Rehearsal Etiquette/Attitude 10 Points- The student is actively involved and is participating in the rehearsal. The student does not talk excessively and does not disrupt the rehearsal process. The student employs a positive attitude throughout the rehearsal.

Participation in sight-reading/singing 5 points- The student is actively participating in the day's sight-singing exercises. The student utilizes correct solfege, Curwen hand signs, and takadimi syllables.

Class preparation 5 points- The student is sitting in their assigned seat with music and pencil in hand when the tardy bell rings. Students have all music and/or worksheets ready to go.

Being in class and at extra rehearsals is very important. Music is the only art that exists in time, and if the student is not there to experience what we are doing as a group, it is very difficult to make up. ***[Therefore, if a student is absent from class the student will need to make up the missed rehearsal by completing sight-reading exercises (each measure is 1 point... so to make up 20 points- 20 measures must be complete) or practice logs (1/4 time missed... if a student missed 10 minutes of class, 2.5 min of the log is expected if missed one hour of class, then the 15-minute log is expected) THIS NEEDS TO BE completed within one week of the class missed. This will allow the student to be eligible for the full 20 points in their daily grade.]***

In addition to the Daily Rehearsal expectations of Rehearsal etiquette/ Attitude, Sight-reading participation, and Class preparation, Early Bird students are docked points for tardiness.

Present for...	Points earned per day	pts deducted	Arrival Time	
60 min	20 pts.	0	7:00	Grace Period
57 min.	19 pts.	0	7:03	Grace Period
54 min.	18 pts.	0	7:06	Grace Period
51 min.	17 pts.	0	7:10	Grace Period
48 min.	15 pts.	5	7:12	Tardy
45 min.	12 pts.	7	7:15	Tardy
42 min.	10 pts.	10	7:18	Tardy
39 min.	5 pts.	15	7:20	Tardy
	0 pts.	20	7:21-8:00	Absent

Content 20% Written/ Oral Classwork

Written and singing assignments are given. Most of these assignments will be announced in advance. Singing tests *may* consist of singing using tape recorders or live, in quartets, octets, individual, etc. They could also include sight-reading or singing music being prepared for the concert. Daily worksheets or notebook work in the area of music theory and vocal technique will be given and will be graded for completion. Quizzes will be given weekly or biweekly and will be graded on accuracy.

Grading Scale: A 90-100/ B 80-89/ C 70-79/ D 60-69/ F below 60

Extra Credit Opportunities: Students may earn extra credit participation points for various activities throughout the school year. Check with Mrs. Jolly for approval. Appropriate documentation must be provided to Mrs. Jolly. Examples of opportunities may be, attending a GHS Band Concert, attending a college performance, attending or participating in a live musical production, etc.

Honors Credit

Students who have already earned 2 credits of chorus are eligible to participate in chorus and hear Honors level credit instead of CP credit. Students interested in this must-see Mrs. Jolly for the Honors Level requirements. These requirements will also be posted on Google Classroom and the GHS Chorus website.

General Information:

Parent Conference: If a parent/guardian wishes to schedule a conference, they may contact Mrs. Jolly via email (jollyg@gwd50.org), by office phone (864-941-5643), by cell phone text (864-993-9374) or by sending a note to school with your child. Mrs. Jolly will respond to your requests at the earliest possible convenience.

Solos: Several decisions go into selecting an appropriate soloist: tone quality, size of voice, expressiveness of voice and face, stage presence, intonation, the ability to ‘sell’ a song, etc. Solos are not chosen based on seniority. The goal is to select the soloist who is the best fit for the song. Soloists must also fulfill the same requirements as Eligibility to participate in Chorus Trips.

Eligibility Requirements for Chorus Trips: In order to participate in choral events such as State Choral Festival, Region Chorus, Chorus-sponsored spring Trips, and All-State Chorus, students must meet these requirements:

1. All financial obligations must be paid a minimum of three weeks prior to the event. 2. Display appropriate behavior in the chorus room as well as in the school. 3. Not have excessive absences, including medically excused absences (if you are not here, you can’t learn music) 4. Musically accomplish the required selections. 5. Abide by the Schools Conduct and Code Book 6. Attend all concerts and performances.

ACDA Honor Choir: It is the expectation that a student who auditions for a choir and is accepted attends the event. Before auditioning, students should check their calendars and make sure that they are available to attend the event. Singers enrolled in a SC choral program who will be in the 9th, 10th, 11th, or 12th grade in the 2023-2024 school year are eligible to audition. For the Audition, students will submit recordings of Vocalise and solo of “My Country Tis of Thee” Recordings are due September 9th. Please check your calendars before you commit to audition. The Honors Choir weekend is January 19-20, 2024.

All State Chorus: It is the expectation that a student who auditions for a choir and is accepted attends the event. Before auditioning, students should check their calendars and make sure that they are available to attend the event. Dates: February 29- March 2nd, 2024. Auditions for SC All-State Chorus occur in November each year. Any student wishing to audition must meet the following qualifications: 1. Current in 9-12. Enrolled in a choral ensemble *ALL YEAR* 3. Attend preparation rehearsals held outside of class 4. Sing your part *a cappella* in quintets 5. Perform sight-reading 6. Travel to Columbia for the audition with other choir members (official date TBA) 7. Pay the audition fee 8. *Students who audition and are accepted into All-State MUST participate in All-State Chorus.*

ACDA Honor Choir and All-State Chorus is an auditioned ensemble of the strongest singers in South Carolina. Therefore, any student who is interested in auditioning for this ensemble must be willing to practice outside of class and work independently on their vocal line and sight-reading skills. All auditions occur in quintets assigned by the director. The Chorus director reserves the right to deny a student the opportunity to audition if that student is not prepared for auditions.

Parent's Responsibility to Chorus: How can parents help?

- Join Remind: enter 81010 on your cell phone and text @infochorus or you can go to this link: <https://www.remind.com/join/infochorus>
- Review the policies in the Choral Handbook and return forms.
- Help the student take care of their voice! Eat healthy, rest, and stay hydrated.
- Teach your child to be prepared and on time for each rehearsal or performance.
- Faithful attendance to all chorus activities is important!
- Display correct concert Etiquette at Concerts/Events
- Buy your child a personal planner for marking important dates.
- Notify directors if the student is to be absent for rehearsals.
- Attend Booster meetings, concerts, and special events.
- **JOIN the GHS CHORUS BOOSTER CLUB** ☺ (The Form is on the GHS website and send home during the first week of school)
- Visit the chorus website frequently to be informed of current events. <http://www.gwd50.org/Domain/373>

Concert Attire:

Chorus Students are not required to purchase Concert Attire. Students have the option to use an outfit on loan from the GHS Choral Department. Students also have the OPTION to purchase their own attire. Outfits will be measured and ordered during the first few weeks of school. The students will be able to use fundraising money to help cover the cost if they choose to purchase their own attire.

Early Bird Women: \$85- New black dress

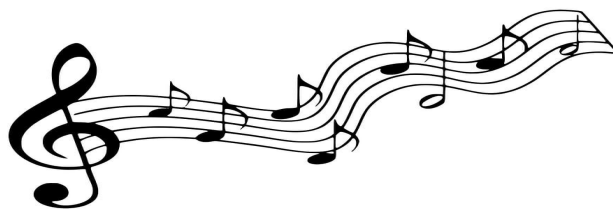
Chorus Women: \$60- Black Dress

Chorus Men: \$60- Black dress pants, Black dress shirt, Several colored ties.

Uniform Guidelines:

1. All students are responsible for keeping their outfits clean and looking their best for ALL performances. Shirts and dresses need to be wrinkle-free for the performances.
2. Students and parents are responsible for minor repairs on outfits if needed (ex. replacing a button). The Uniforms are to be turned in as they were checked out.
3. Students and parents are responsible for hemming the black pants and dresses if necessary, but you CAN NOT CUT the material- you must hand stitch so that it can be let back out if needed.
4. Students will be responsible for providing black dress shoes (and black socks for guys) for the concert. Sandals, clogs, and tennis shoes are not permissible.
5. No Jewelry, unless it is a part of the uniform of the group. (small stud earrings are fine)

It is essential that everyone in a performing group dress and grooms themselves uniformly. Jewelry, makeup, clothing, and hairstyle need to not call attention to one individual. All hair should be styled so that it is not in your eyes. Ultimately, the group image is more important than individuals. Students' concert dress is a portion of their performance grade.



Fundraising:

The Choral Booster Club will hold several fundraisers throughout the course of the school year. Students will be given the opportunity to participate in Fundraising that can go towards their chorus attire, Chorus trips, etc. A large portion of the money raised from fundraising will benefit the entire choral program of GHS. Fundraising is one of the facets that help make this program one of the strongest in the state. GHS Concerts that are not ticketed events are a recommended \$2.00 donation at the door.

Why is fundraising necessary for Chorus? The money pays for things such as; Choral Music, Accompanists for performances, Professional musicians during performances, Copying, Classroom Supplies and Teaching Materials, Piano Tuning, Festivals and Trips, and Guest Clinicians,

The choral program is extremely fortunate to have supportive parents and students who fundraise. Please observe all fundraiser turn-in dates carefully. Parent volunteers handle all features of fundraisers, including money handling. If a student is late turning in money/forms/orders, it puts a strain on those handling the logistics. For certain fundraisers, orders may not be able to be met if orders are turned in late.

Student Accounts: Through fundraising and sponsorships, students may raise points specifically to go into their "student account". This account may be used for chorus trips, chorus attire, or any extra chorus fee required. *If a student graduates without using the point balance in their account, the money will be assumed into the general chorus booster operating fund. However, if the graduating senior has a younger sibling, the points may be transferred to their account.

Awards:

1. Most Valuable Musician -awarded to student(s), who have exhibited outstanding achievement, attitude, work ethic, citizenship, and cooperation. Must meet the requirements listed below. **Selected by Classmates.**
2. Director's Choice Award- awarded to one student per chorus ensemble who exhibited outstanding achievement, attitude, work ethic, citizenship, cooperation, and leadership. Must meet the requirements listed below. **Selected by the director.**

*Eligibility for Awards: No unexcused absences from a chorus performance, concert, after-school rehearsal, or Festival. Complete follow-through on all commitments. "A" average for the year in Chorus. Abided by all Conduct rules. Must have paid all financial obligations (Uniforms, fair-share, fund-raisers, etc.)



GHS Chorus Concerts and Events for the 2023-2024 school year

**Any additional events will be given on a two-week notice*

Eagle Singers Retreat <i>Eagle Singers Only</i>	August 11 (4-10 pm)-12th (10 am-5 pm)	TBD
SC ACDA Honor Choir Audition Due <i>Eagle Singers/ Treble Choir</i> <i>*by invitation only if not in the above choirs</i>	September 11th	Online submission
Fall Concert Performance <i>All classes- required</i>	September 18th, 7:00 pm	GPAC (Greenwood Performing Arts Center)
Braves Game <i>Eagle Singers/ Treble Choir</i>	September 20th <i>*Please purchase tickets through GHS</i>	Truist Park, Atlanta GA
Region Choir <i>*by invitation only</i>	October 24th	Newberry College
All-State Auditions <i>9th- 12th-optional</i>	November 7th- 11th, TBD	Columbia, SC
Winter Concert <i>All Classes- required</i>	December 12th, 7:00 pm	GPAC (Greenwood Performing Arts Center)
DISNEY TRIP <i>Eagle Singers/ Treble Choir</i> <i>*by invitation only if not in the above choirs</i>	December 13th- 16th	Orlando Fla.
ACDA Honor Choir Weekend <i>*those selected by auditions</i>	January 19-20	Francis Marion University
All State Chorus Weekend <i>*those selected by auditions</i>	February 29- March 2nd	Winthrop University
Winter's End Concert <i>2nd-semester choirs- required</i>	March 18th, 7:00 pm	First Presbyterian Church
SCMEA CPA <i>Eagle Singers only</i>	March 25th or 26th	TBD
SCMEA Solo and Ensemble <i>9th-12th optional</i>	April 13th or 20th	TBD
GHS Spring Chorus Concert <i>2nd-semester choirs- required</i>	May 23, 7:00 pm	GPAC (Greenwood Performing Arts Center)